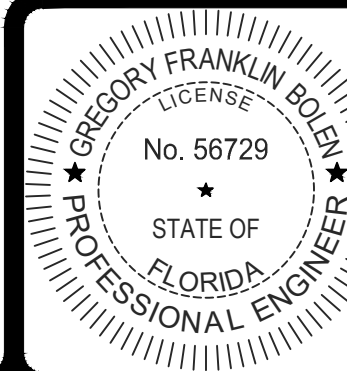


DRC

PZ25-1200024

09/17/2025 5:15 PM AUTOCAD_FILES\2025\25-093\CONCEPTUAL\25093C03_PD.dwg 8/13/2025 1:15 PM Daniel Brunet

DATUM NOTES:
1.) ALL ELEVATIONS SHOWN HEREON ARE RELATIVE TO THE NORTH AMERICAN VERTICAL DATUM (N.A.V.D.) OF 1988 BASED ON A SURVEY PREPARED BY MARTINEZ & MARTINEZ ENTERPRISES, INC. 786-277-4851.
2.) AN APPROXIMATE CONVERSION BETWEEN THE NATIONAL GEODETIC VERTICAL DATUM (N.G.V.D.) OF 1929 AND N.A.V.D. CAN BE MADE BY ADDING 1.572' TO THE N.A.V.D. ELEVATION TO OBTAIN THE N.G.V.D. ELEVATION.



THIS ITEM HAS BEEN DIGITALLY SIGNED AND SEALED BY GREGORY FRANKLIN BOLEN, P.E. ON 8/13/2025.
PRINTED COPIES OF THIS DOCUMENT ARE NOT CONSIDERED SIGNED AND SEALED AND THE SIGNATURE MUST BE VERIFIED ON ANY ELECTRONIC COPIES.

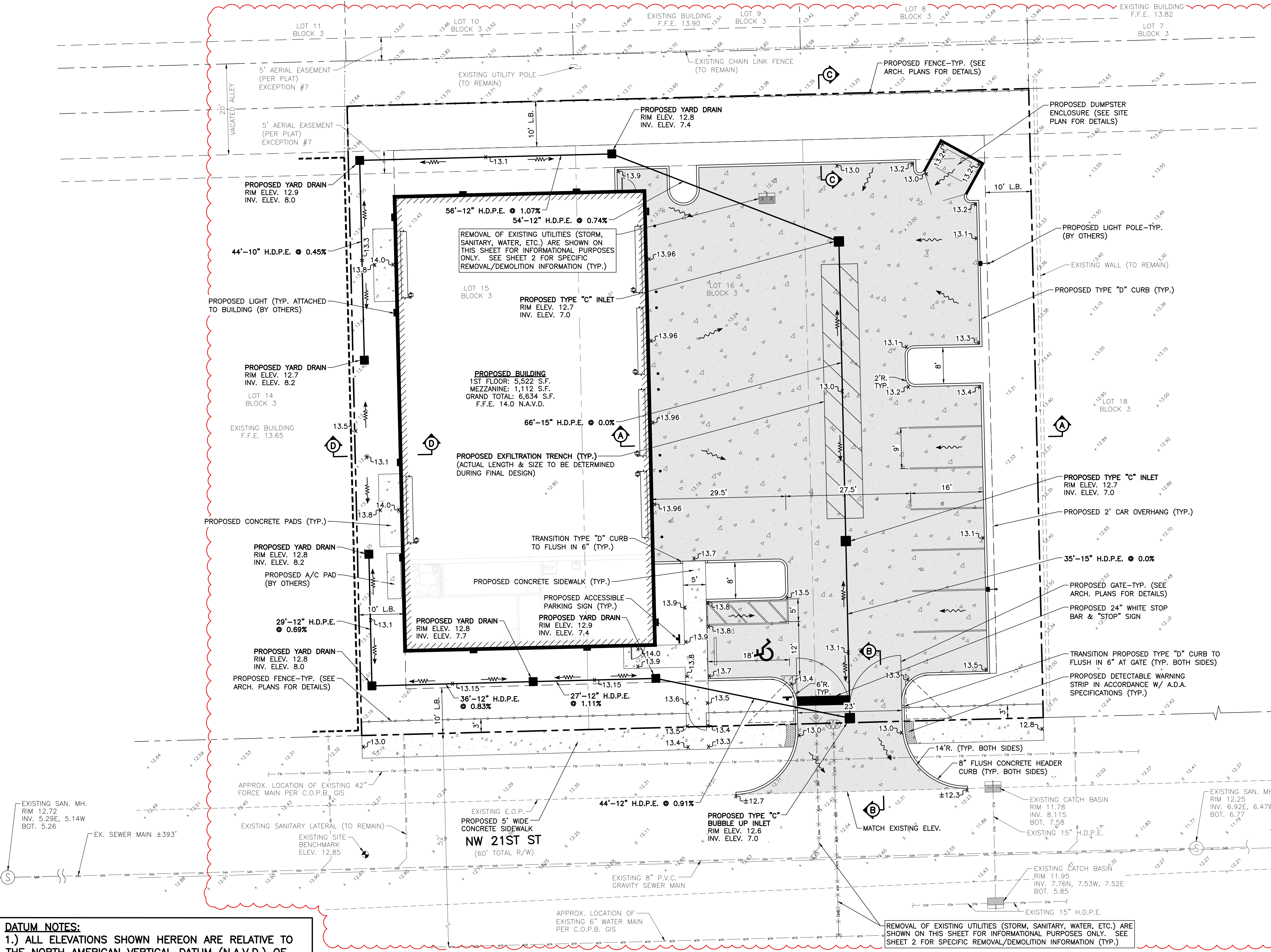
1.) REVISED PER DRC PLAN REVIEW, 08/12/25 D.B.



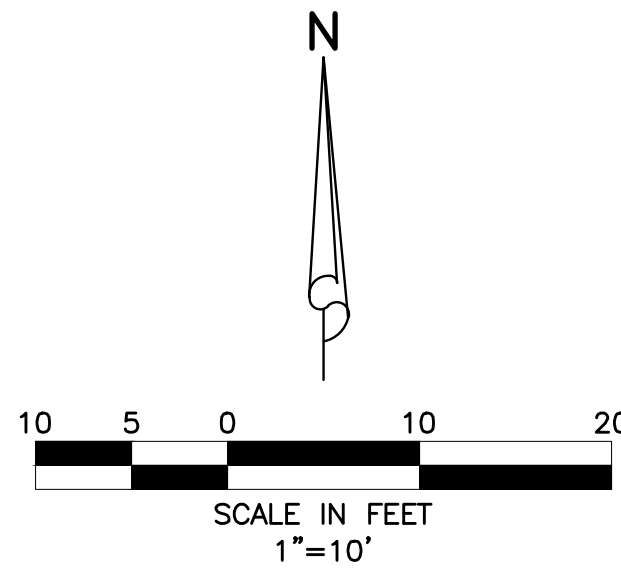
DESIGN	DRAWN	CHECKED	APPROVED	DATE
C.M.	B.L.			

HODGE MARINE
SECTION 27, TOWNSHIP 48S., RANGE 42E.
CITY OF POMPAÑO BEACH, FLORIDA
**CONCEPTUAL
PAVING AND RAINAGE PLAN**

JOB NO.	DRAWING NO.	SHEET	OF
25-093	25093C03	C-3	C-15



LOCATION MAP
NOT TO SCALE



LEGEND

- PROPOSED STORM SEWER AND CATCH BASIN
- DIRECTION OF FLOW
- DIRECTION OF SWALE
- PROPOSED GRADE ELEVATION
- EXISTING GRADE ELEVATION
- PROPOSED CONCRETE PAVEMENT
- PROPOSED CONCRETE SIDEWALK
- PROPOSED EXFILTRATION TRENCH
- PROPOSED LIGHT POLE (BY OTHERS)
- EXISTING STORM DRAINAGE PIPE (TO REMAIN)
- EXISTING WATER MAIN (TO REMAIN)
- EXISTING SEWER MAIN (TO REMAIN)
- EXISTING STORM DRAINAGE PIPE (TO BE REMOVED. SEE SHEET C-2 FOR INFORMATION)
- EXISTING SEWER MAIN (TO BE REMOVED. SEE SHEET C-2 FOR INFORMATION)

- NOTES:**
- THIS DESIGN IS CONCEPTUAL AND SUBJECT TO CHANGE BASED ON FINAL DESIGN.
 - ALL WATER AND WASTEWATER CONSTRUCTION SHALL BE IN ACCORDANCE WITH THE CITY OF POMPAÑO BEACH AND THE BROWARD COUNTY HEALTH DEPARTMENT.
 - CONTRACTOR SHALL BE RESPONSIBLE FOR REMOVAL OF ALL DEMOLITION MATERIAL IN ACCORDANCE WITH ALL APPLICABLE GOVERNING AGENCY STANDARDS.
 - LOCATIONS OF WATER AND SANITARY SEWER SERVICES, DRAINAGE STRUCTURES AND PIPES AND OTHER STRUCTURES TO BE COORDINATED WITH LANDSCAPE DESIGN DURING PREPARATION OF FINAL CIVIL ENGINEERING PLANS.
 - CONSTRUCTION AND DEMOLITION TO COMPLY WITH N.F.P.A. 241.
 - FIRE DEPARTMENT LOCKING CAPS WILL BE REQUIRED ON THE FIRE DEPARTMENT CONNECTION.

1857 NW 21ST STREET